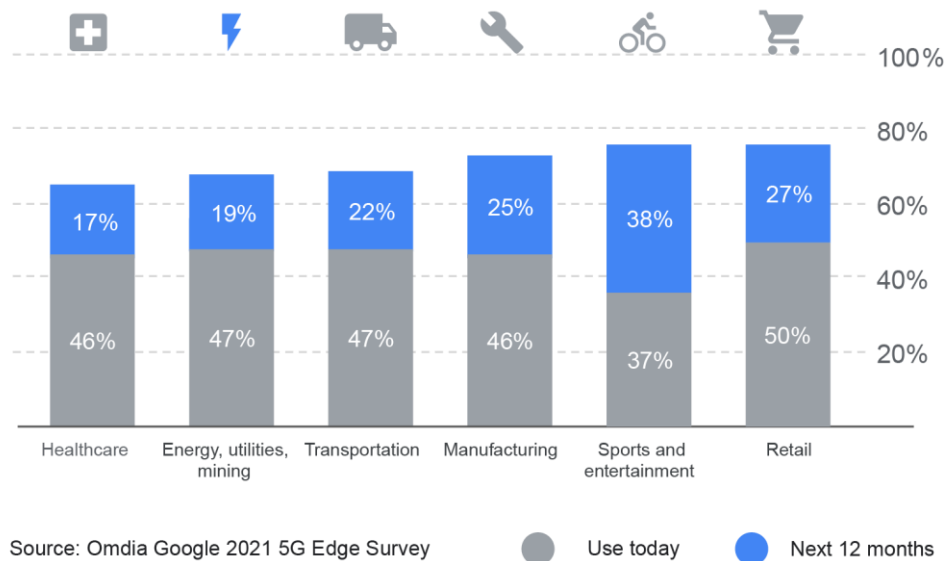


# Google Distributed Cloud Connected

Empowering Enterprises with Scalable Solutions



Edge is becoming mainstream and fast



In today's fast-moving digital landscape, businesses across industries are embracing cloud-based solutions, allowing them to adapt quickly, optimise costs, manage their assets and efficiently manage customer experiences.

The question for these businesses is no longer whether they will adopt cloud solutions, but when and which platform they will partner with moving forward, as almost 70% of enterprises expect to have deployed a form of edge within the next 12 months.

## Industries are Buying into Edge

With Edge becoming mainstream fast, our goal is clear - to help businesses of all sizes leverage digitalisation through implementing cloud solutions, internet of things (IoT) and artificial intelligence (AI) to improve efficiency, scalability, stronger control over their assets and have better engagement their stakeholders, through our integrated hardware and software solution, **Google Distributed Cloud Connected**.

Equipped with leading AI capabilities and IoT, businesses not only keep pace with change, but also better position themselves ahead of the competition, unlocking new opportunities for growth and long-term success.

# What are the Drivers for Edge?



Privacy / Security

## Regulations

When interactions of information is confidential, personal or regulated and data sovereignty is needed.



Limited / Connectivity

## Connections durability

When the processing needs to continue even if the connection is down.



Data / Bandwidth

## Data volume

When data is high-volume, noisy, expensive or time consuming to send elsewhere.



Latency / Determinism

## Link speed

When decision time matters, windows of opportunity are small, interactions require locality.

## Guided by Three Principles

### Network tolerance

Networks are unstable and cannot be guaranteed to have service. Networks are not of the same quality even in the same market.

Therefore, this solution must be operational in the event that the WAN network is unusable, unstable or fully saturated.

### Cost-efficient

This solution is being sold to franchises and business owners who are operating with low margins.

Financial costs need to be considered to be applied when deciding the technologies, architectures and hardware to deliver an edge service strategy

### Ease of operation and adoption

Tens of thousands of instances will be deployed worldwide and at the scale, technical expertise will not be available at a moments notice.

Decisions need to be made in order to maximise the operations of the individual services.

## Equipped with Google's Unified AI Stack



### Integrated Gemini assistants

Gemini for Google Cloud | Gemini for Google Workspace



### AI Applications and Agents

Google pre-built | Customer built



### Google Agentspace

Enterprise Search | NotebookLM | Agent Garden



### Vertex AI

Model Garden | Model Builder | Agent Builder



### Data

Multimodal | Vector Search | AI Insights | Data Science



### Models

Gemini | Imagen | Veo | Partner | Open



### AI Hypercomputer

Performance-optimized hardware | Open software | Google Distributed Cloud | Flexible consumption



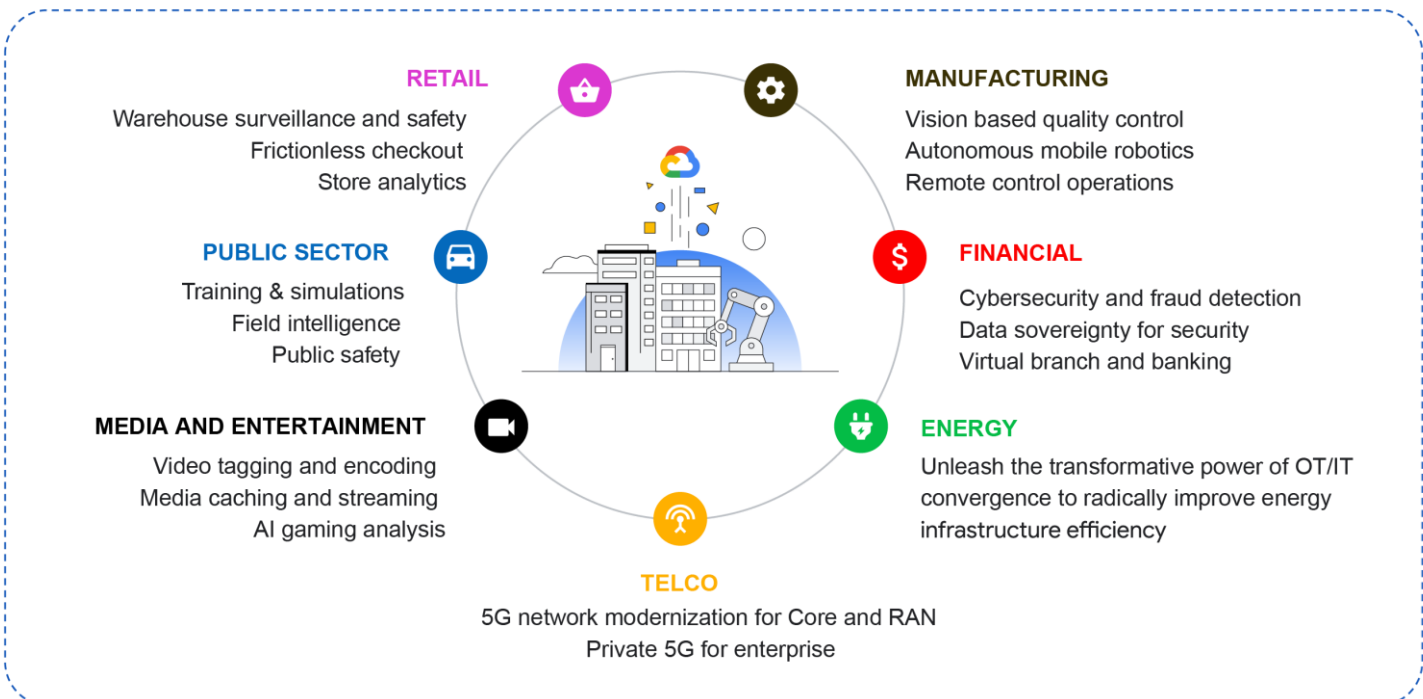
# Fully Managed Infrastructure

Fully managed infrastructure by Google, where the customer has visibility, shared responsibility (e.g., data security) and necessary control (e.g., scheduled maintenance windows).

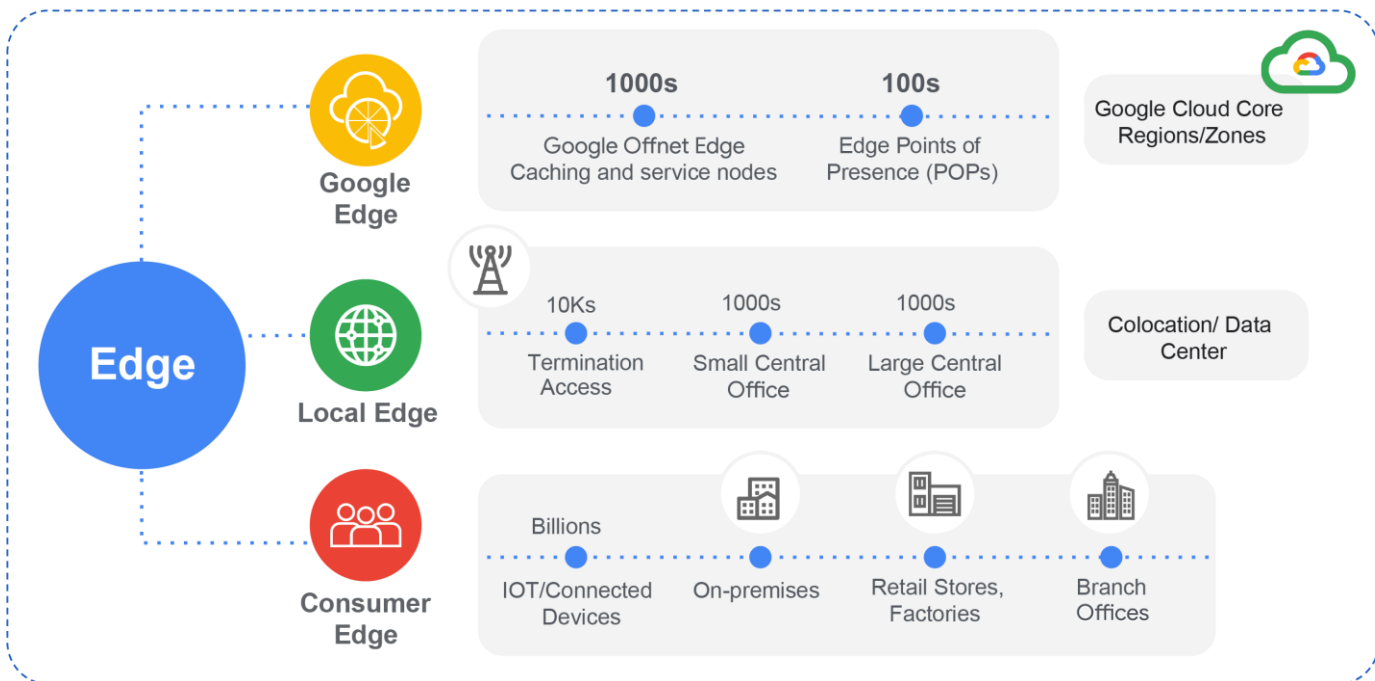
- 
**Hardware procurement and supply chain logistics**  
 Allows Ordering, import/export compliance, staging, delivery at a glance.
- 
**Hardware installation and smart hands**  
 Support for turn-up and repairs, BIOS/Firmware management.
- 
**Host OS and base software management**  
 Automated installation, updates and health monitoring.
- 
**Platform health monitoring and alerting**  
 Machine health, alerting, SRE support, 24x7 on-call.
- 
**Automated repair and maintenance**  
 Vendor integration.

## Use Cases

GDC Connected empowers businesses across industries to optimise operational efficiency and elevate user experiences by harnessing AI and IoT to cater to their business needs.

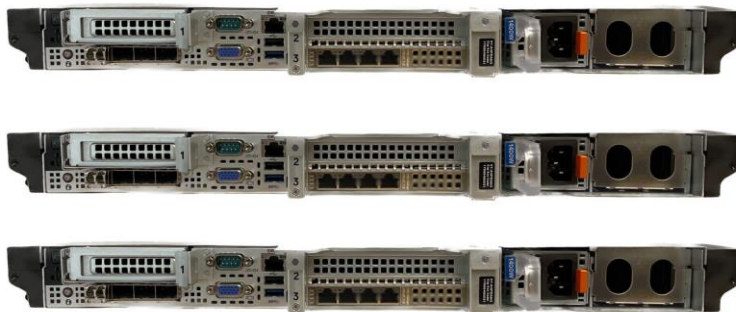


# Flexible Operational Model



## Google Distributed Cloud Edge Hardware Option

### Customer-managed ToR



#### GDC Edge (Server)

3-node Blade cluster

- Small 16 vcpu/32GB/800GB\*
- Medium 32 vcpu/64GB/1.6TB
- Large 64 vcpu/128GB/3.2TB
- 3U total, full width, half depth

#### Future Configurations

- 1-Node option
- GPUs



**Gamuda DNE X**

A | Level 9, Block A, Menara Mustapha Kamal, PJ Trade Centre, No. 8, Jalan PJU 8/8A, Bandar Damansara Perdana, 47820 Petaling Jaya, Selangor, Malaysia

+603 7495 2819

gamudadnex.cloud